



LIFE farming

Topic “Climate Change Adaptation”:
LIFE MONTADO ADAPT

Maria Bastidas (ADPM)



LIFE
MONTADO-ADAPT
MONTADO & CLIMATE, A NEED TO ADAPT

LIFE International networking conference
**LIFE farming – environmentally
sustainable agriculture**

Kranj, Slovenia 2018

Project Name MONTADO & CLIMATE; A NEED TO ADAPT

Acronym LIFE Montado Adapt **Reference** LIFE15 CCA/PT/000043 **Duration** 01-SET-2016 till 01-SET-2021 **Global budget** 3.439,746 €

E.U. Contribution 2.051.538 €

The LIFE Montado-Adapt project is an initiative co-financed by the European Union through the LIFE Program 2014 – 2020, Climate Action Sub-programme, which support projects that develop innovative ways of responding to the challenge of climate change in Europe.



Project coordinator



Technical team



Research team



Field team



Montado/Dehesa - the value

It is heterogeneous set of non-timber forest production system, based on the exploration of quercus species, usually *Q. suber* and *Q. rotundifolia*, in combination with a non-intensive use of agricultural, livestock and/or hunting. It is classified as an agro-silvo-pastoral and multifunctional system.

typical for southern and central Portugal and

Spain.

The conservation of habitats “**Dehesas with evergreen *Quercus spp*”** (6310), “***Quercus suber* forests”** (9330) and “***Quercus ilex* e *Quercus rotundifolia* forest”** (9340) it is considered as mandatory by the Member States.

It is also recognized its cultural and historic value. In fact, nowadays, different entities from Portugal and Spain, are working in the proposal to be considered in the list of UNESCO world heritage, by its outstanding universal value.



Montado/Dehesa – the threat

The abandonment of agricultural activity or its intensification, unsustainable agricultural practices and climate change are in the origin of Montado/Dehesas increasing decline, reflected in a reduction in the density of the forest and in its susceptibility to the attack of aggressive organisms and pest (*Phytophthora cinnamomi*, *Botryosphaeria* spp., *Biscogniauxia mediterranea*, *Platypus cylindrus* etc.)

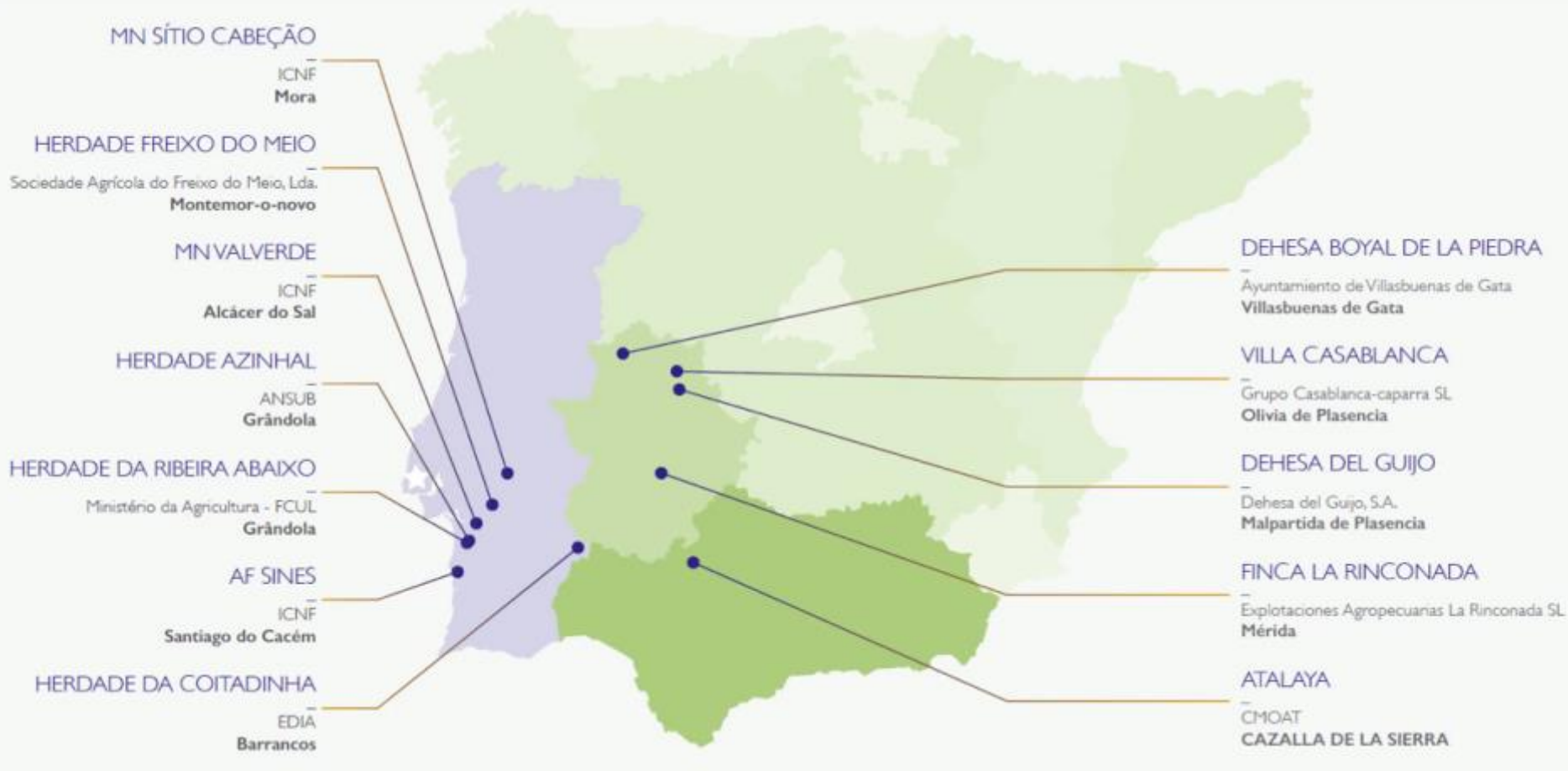


WHAT IS LIFE Montado-Adapt?

It is a project to promote the adaptation of the Montado/Dehesa system in Portugal and Spain, which main objective is to mitigate the consequences of climate change, increasing the sustainability at an economic, social and environmental level.

HOW WE WILL DO IT?

Implementing Integrated Land Use (ILU) systems in 12 pilot area



7 in Portugal

7 Alentejo region

5 public / 2 private

12 Pilot areas

5 in Spain

4 Extremadura region

1 public / 3 private

1 Andalucía region

1 public

STRATEGIES TO ILU SYSTEM



Diversification of crop production through the alternation of agricultural with forest ones (agroforestry and intercropping management)



Diversification of crop in species and varieties choosing the most resistant to the adverse climatic conditions and profitable from an economic point of view (attention to autochthones species)



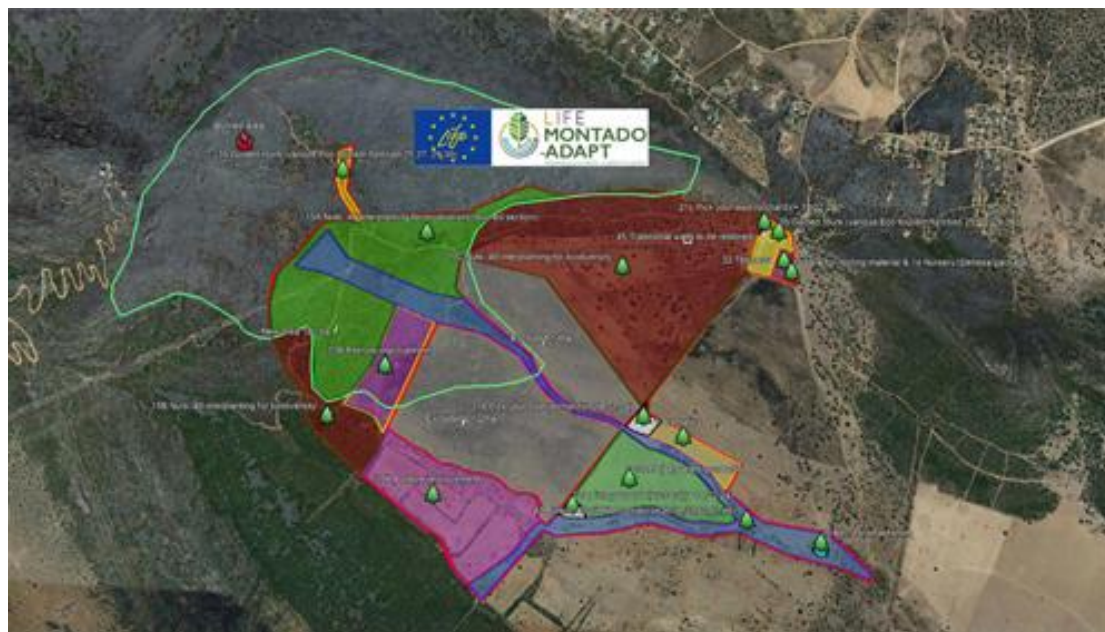
Act in accordance with international standards in order be possible to achieve the certification of products



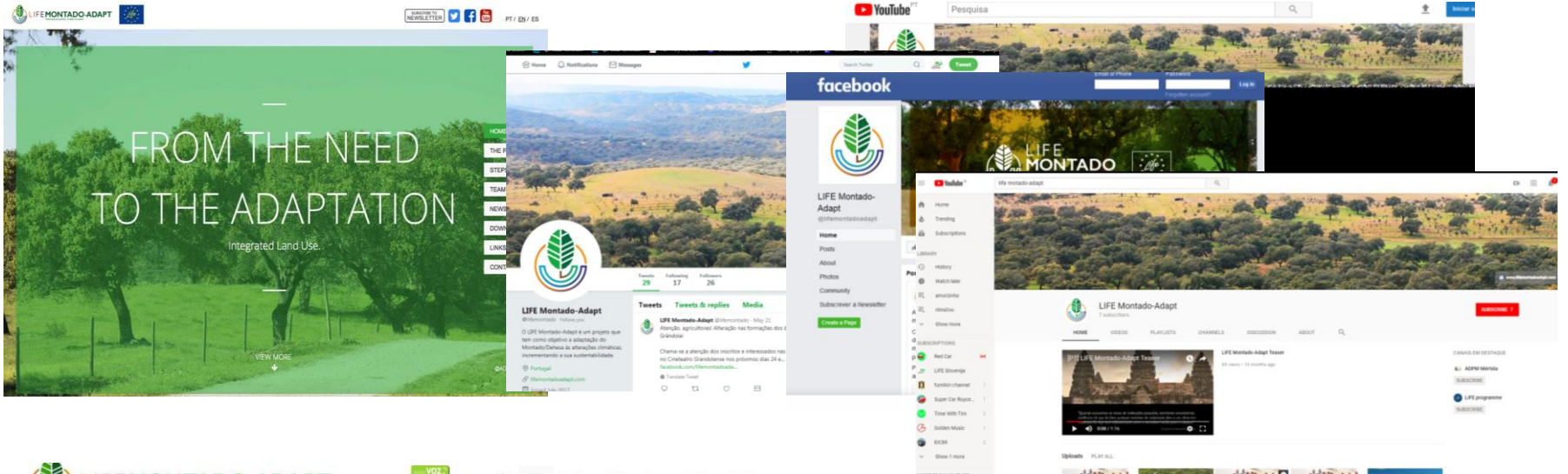
Improve soil health through different techniques (green manures, mycorrhization, mulch, control erosion etc.)



Diversification of income sources, not only in terms of eco-products, but also eco-services.

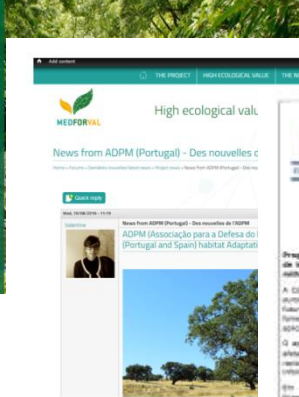
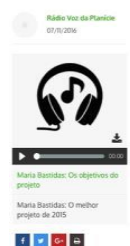


FOLLOW US



Programa LIFE da União Europeia apoia projecto da ADPM

O projecto LIFE Montado-Adapt da ADPM é financiado por fundos europeus e por fundos portugueses inovadores de investimento da União Europeia.



LIFE Montado-Adapt es un proyecto de impulso a la adaptación de las Dehesas en Portugal y España, que tiene como principal objetivo atenuar las consecuencias del cambio climático en estos sistemas, mejorando su sostenibilidad desde el punto de vista económico, social y ambiental.

ACONTECIMIENTOS DESTACADOS



REUNIONES DE LANZAMIENTO
El proyecto LIFE Montado-Adapt comenzó el 1 de septiembre de 2016. Las primeras actividades fueron las reuniones de lanzamiento del proyecto. El día 9 de septiembre se celebró la primera reunión del proyecto, donde se presentaron todos los procedimientos para una correcta ejecución del proyecto. Finalmente, el 21 de octubre, las 4 entidades científicas del proyecto junto con ADPM y PSG se reunieron para coordinar las acciones de investigación, que están actualmente en ejecución en las 12 áreas piloto del proyecto. La última reunión de lanzamiento del





María Bastidas
