

# Notranjski regijski park

## Notranjska Regional Park

### Intermittent Cerknica Lake

#### LIFE06 NAT/SI/000069



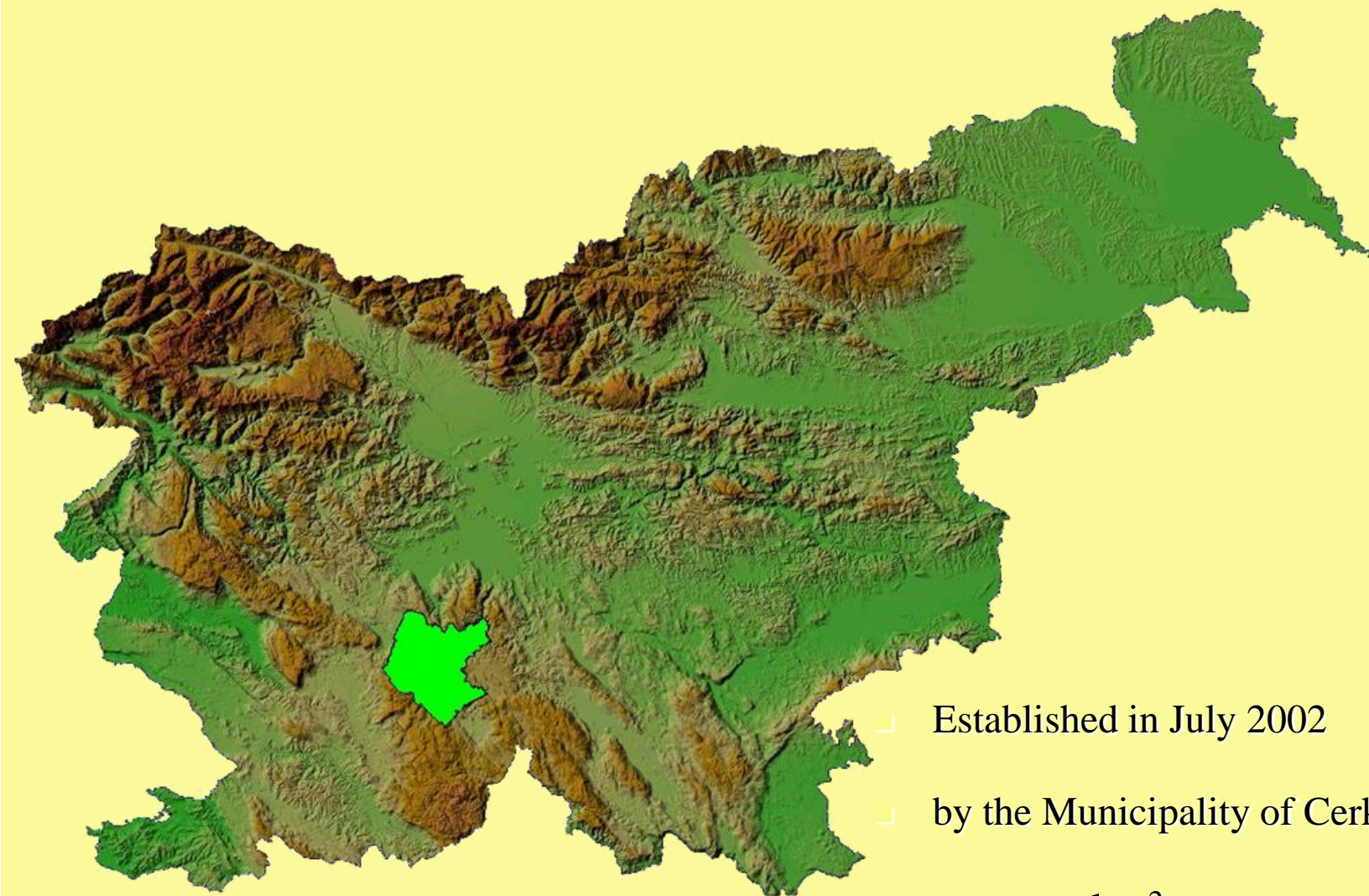
PROJEKT LIFE 06  
PRESHAJOCJE  
CERKNIŠKO  
JEZERO



RAMSAR  
svetovna konvencija  
o zaščiti mokrišč



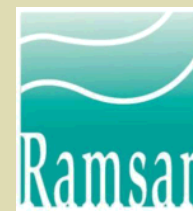
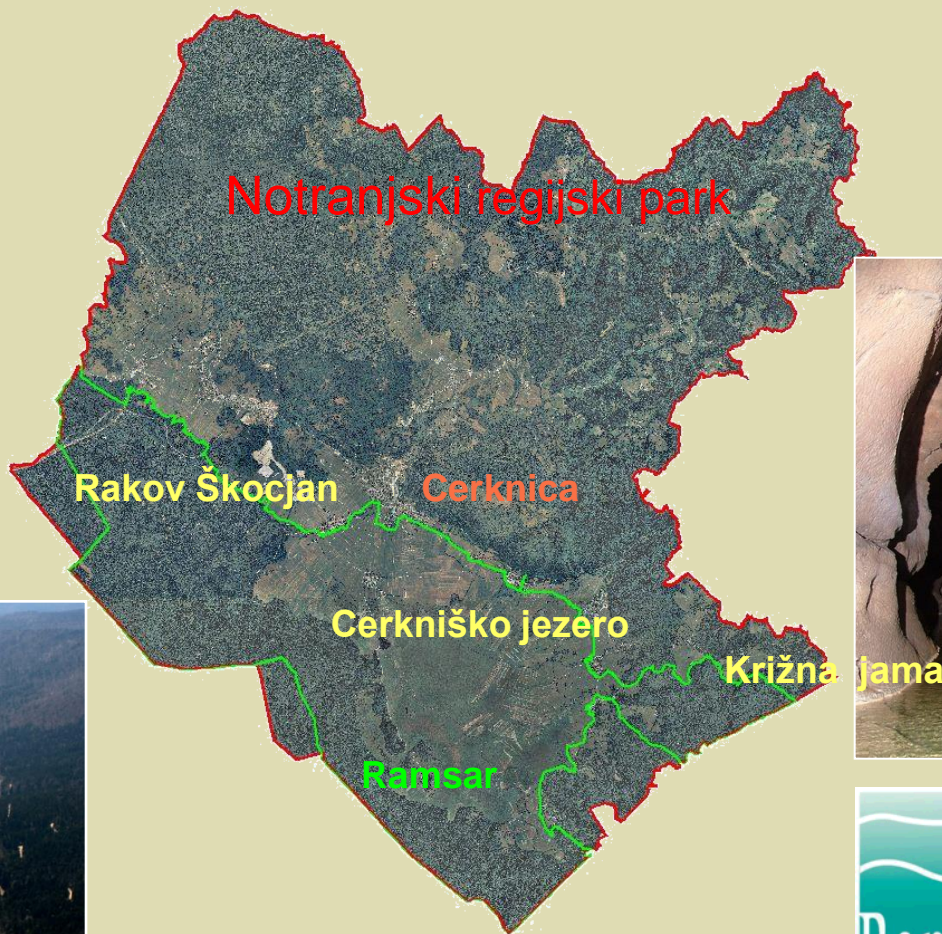
# LOCATION OF NOTRANJSKA REGIONAL PARK



- ┌ Established in July 2002
- ┌ by the Municipality of Cerknica
- ┌ Area 222 km<sup>2</sup>



# NATURAL VALUES IN THE PARK





NOTRANJSKI  
REGIJSKI PARK

# INTERMITTENT CERKNICA LAKE



■ Cerknica Lake - Project area



NOTRANJSKI  
REGIJSKI PARK

# SINKHOLE GEBNO



Gebno



NOTRANJSKI  
REGIJSKI PARK

# SINKHOLE KOTEL



Kotel



NOTRANJSKI  
REGIJSKI PARK

# ESTAVELLE KOTEL



Kotel - estavela



# ACTIVITIES ON THE LAKE DURING WET AND DRY SEASON



Preplavljeno.



Suho ob košnji.

Cerkniško jezero.

*Podraru na vse 2*



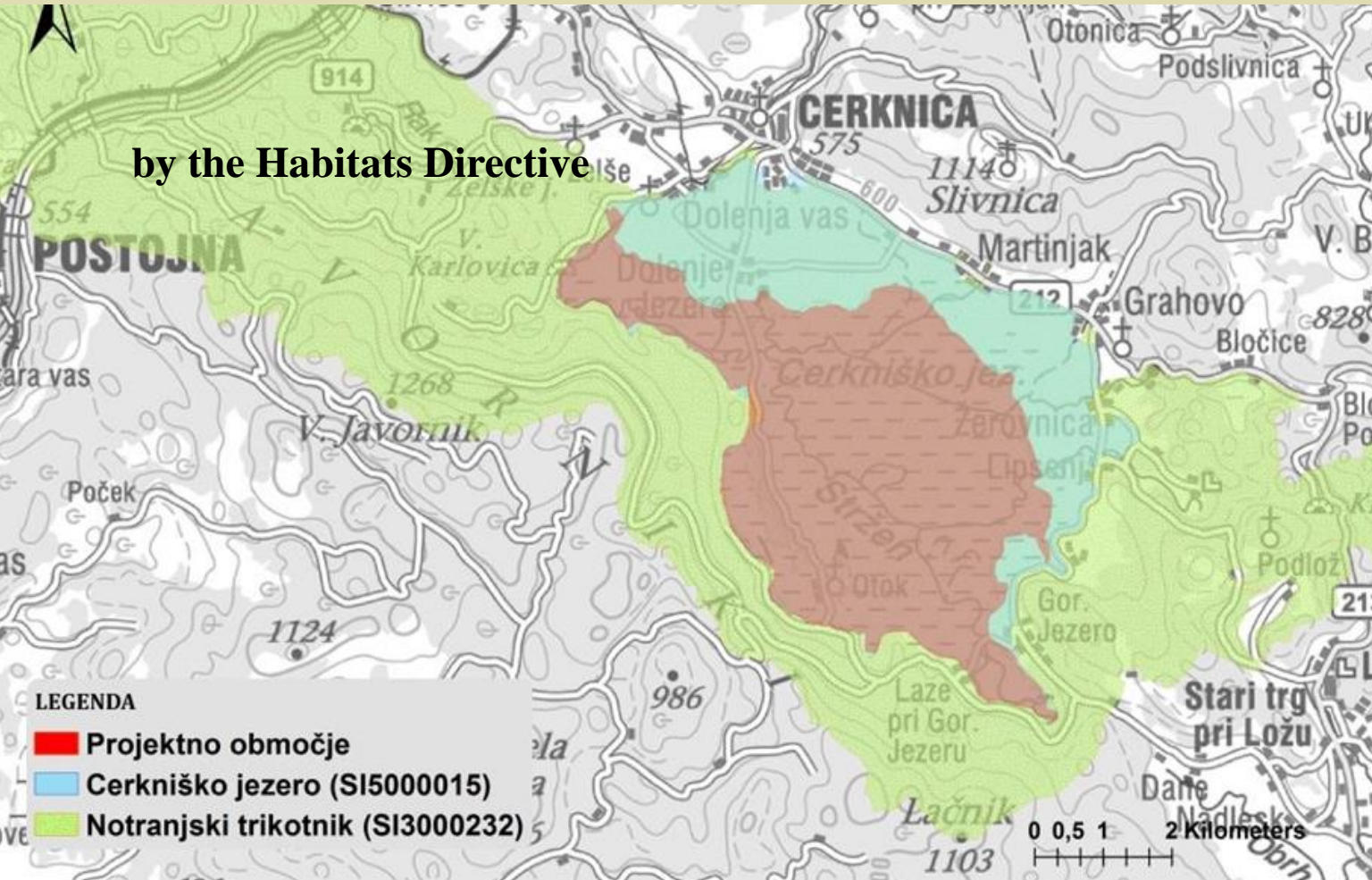


Georg Werhner 1551



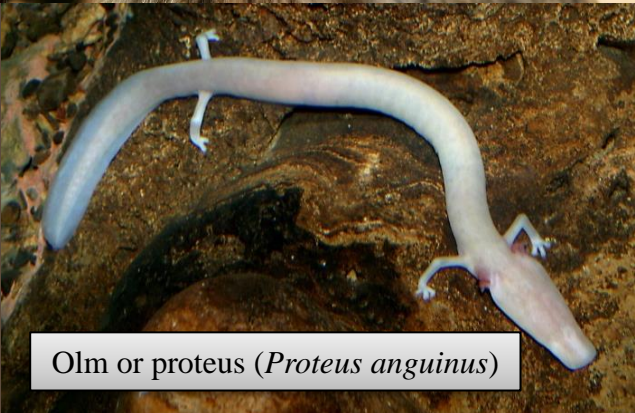


Cerknica Lake is covered by two Natura 2000 sites





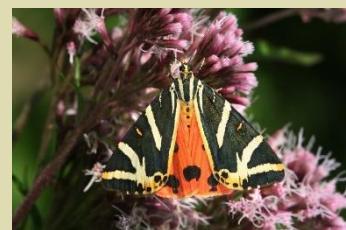
Yellow-bellied toad (*Bombina variegata*)



Olm or proteus (*Proteus anguinus*)

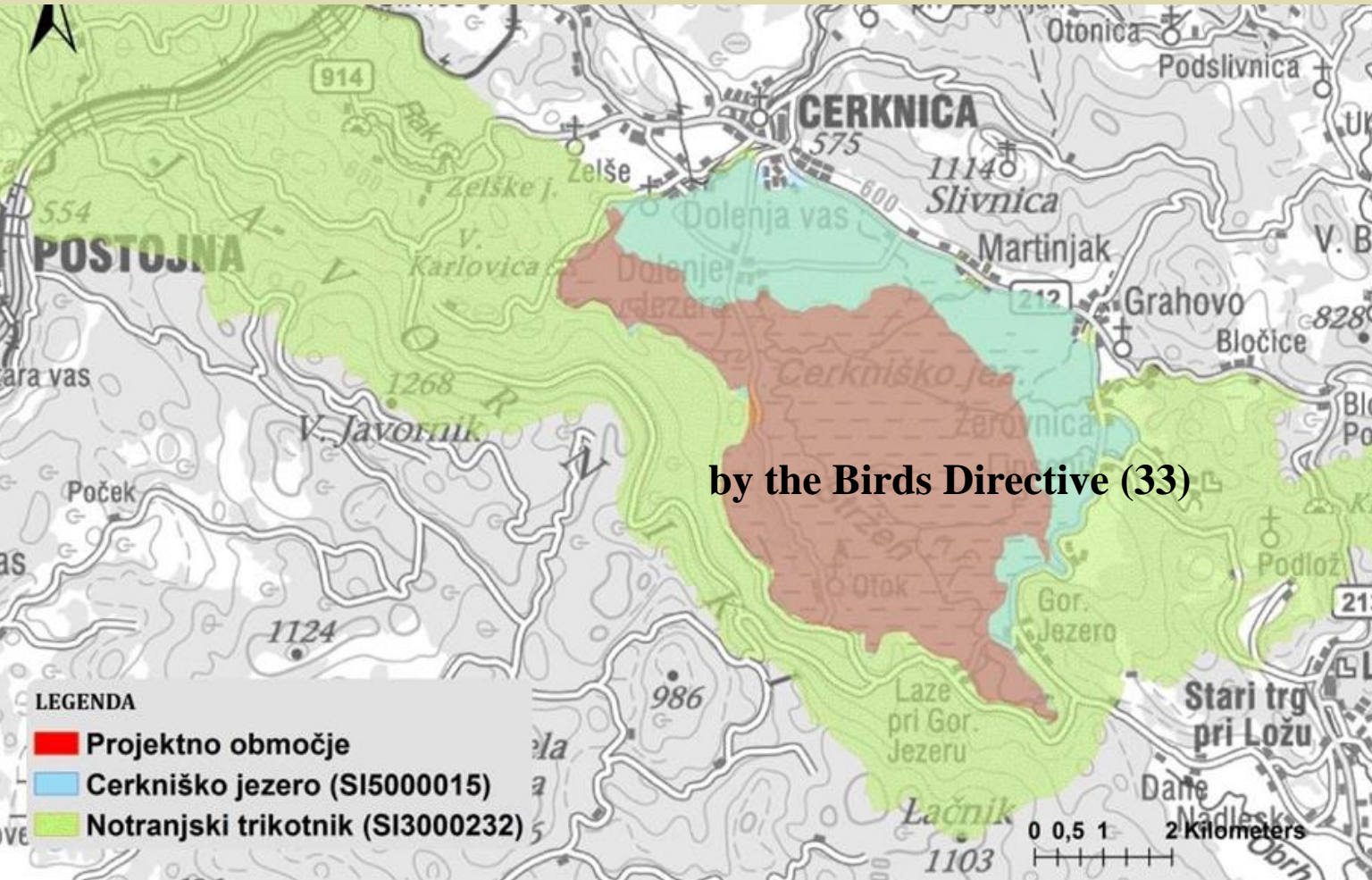


Large copper (*Lycaena dispar*)



Jersey tiger (*Callimorpha quadripunctaria*)

**Cerknica Lake is covered by two Natura 2000 sites**





# NATURA 2000 BIRD SPECIES



Red-necked grebe (*Podiceps grisegena*)



Great white egret (*Egretta alba*)



Great Bittern (*Botaurus stellaris*)



Purple heron (*Ardea purpurea*)



# NATURA 2000 BIRD SPECIES



Black stork (*Ciconia niger*)



Common crane (*Grus grus*)



White-tailed eagle (*Halieaetus albicilla*)



Short-toed snake eagle  
(*Circaetus gallicus*)





# FIRST LIFE PROJECT OF NOTRANJSKA REGIONAL PARK

LIFE03 NAT/SLO/000077

Crex Slovenia - Establishing  
long-term protection of *Crex*  
*crex* in Slovenia

from 2003 to 2006

Coordinating beneficiary:  
DOPPS BirdLife Slovenia

Partners:  
Municipality of Ljubljana  
Municipality of Cerknica

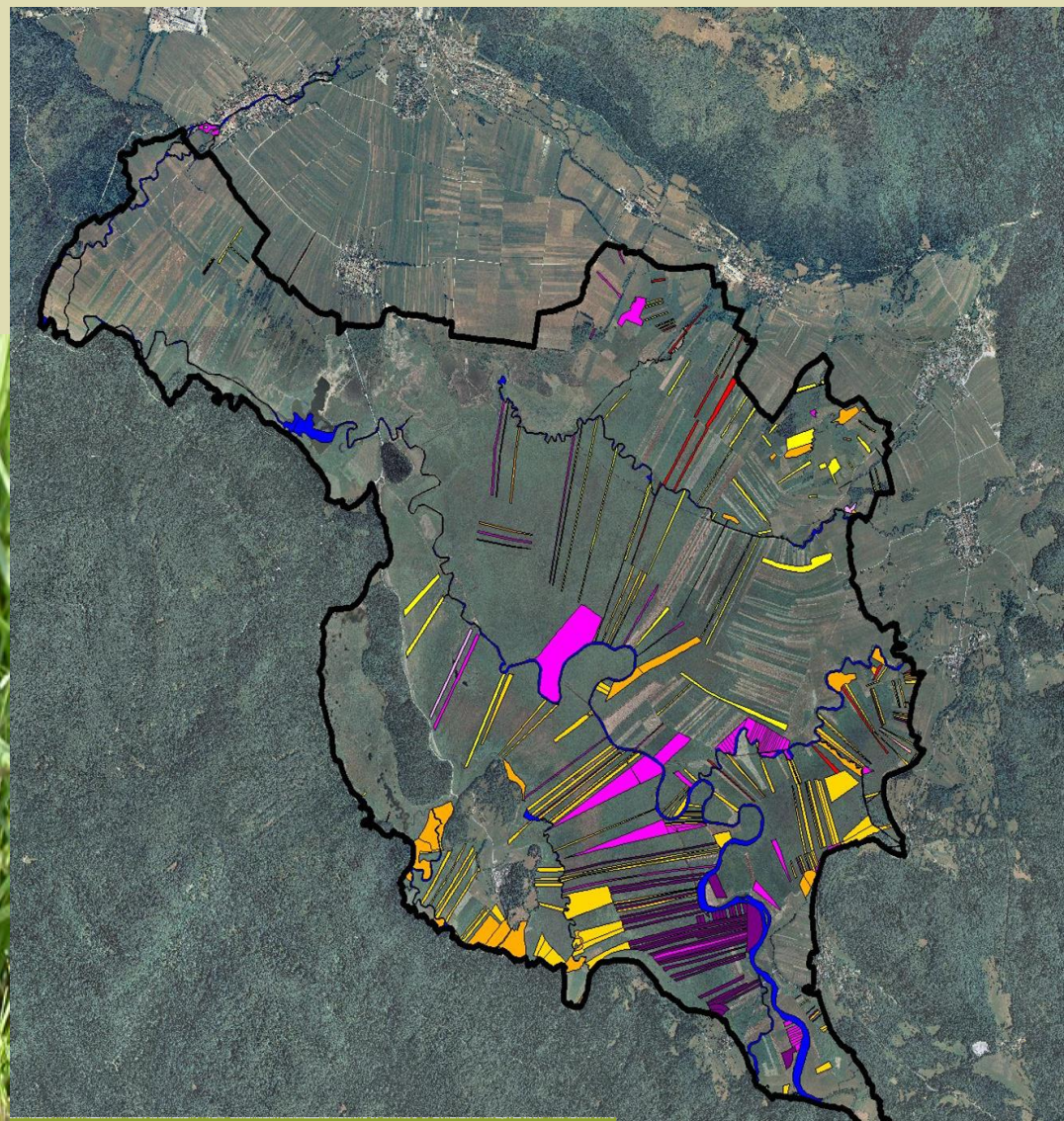


*Crex Crex*

The main results of the LIFE Crex Crex project were:

1. An Action Plan for the Corncrake
2. Introduction of a new Agri-Environmental Scheme for the protection of the Corncrake and other endangered wet grassland birds in priority Natura 2000 sites
3. To increase the potential habitat for *Crex crex*, plots of land were leased or purchased on three sites (area surrounding Lake Cerknica, in the flat fields of Ljubljansko barje and along the Nanoščica River)
4. An innovative bird friendly mowing technique was successfully tested during the project. Initially, the farmers reacted negatively to the use of the new technique, however, it was eventually accepted and widely used in the project areas.
5. Raised awareness about this species among locals and general public

- Purchase of 153 ha of overgrown privately owned land on Cerknica Lake
- mowing





## LIFE PROJECT Intermittent Cerknica Lake

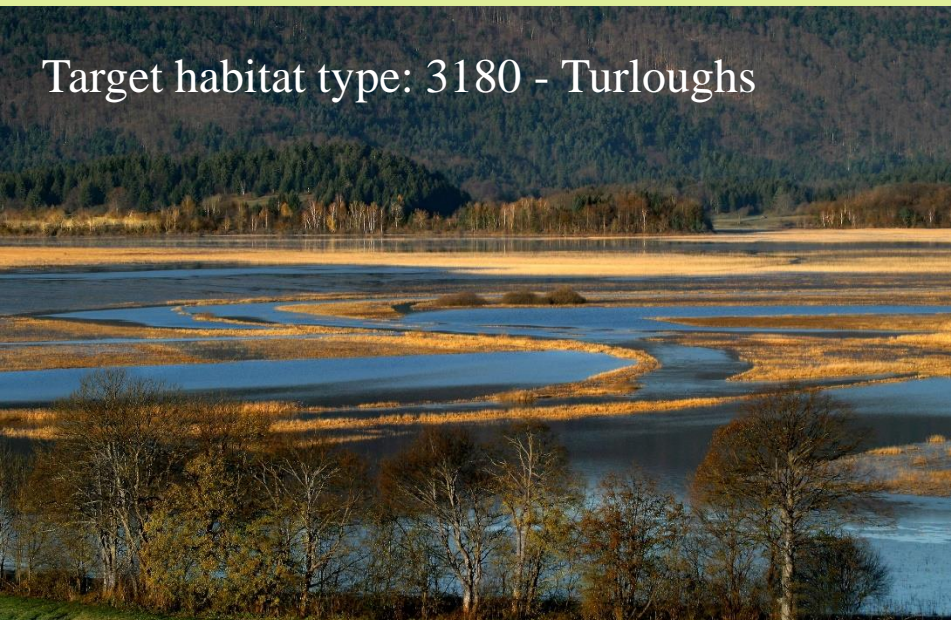
**Coordinating beneficiary:**  
Notranjska Regional Park

**Partners:**  
Biotechnical Faculty  
Inženiring za vode

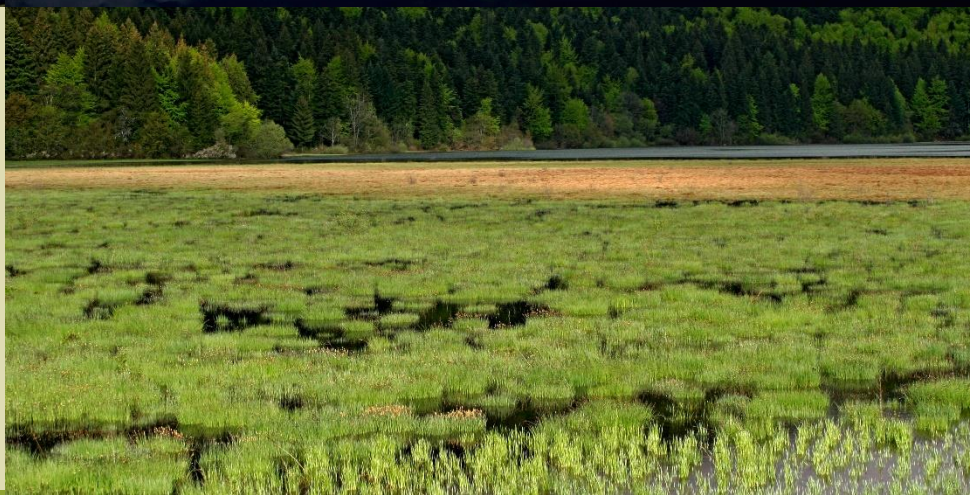
**Budget: 1,8 mio EUR**  
(Cofinanced by EU (1,3 mio EUR) and by Ministry for Environment)

**Project duration: January 2007 – December 2009**

Target habitat type: 3180 - Turloughs



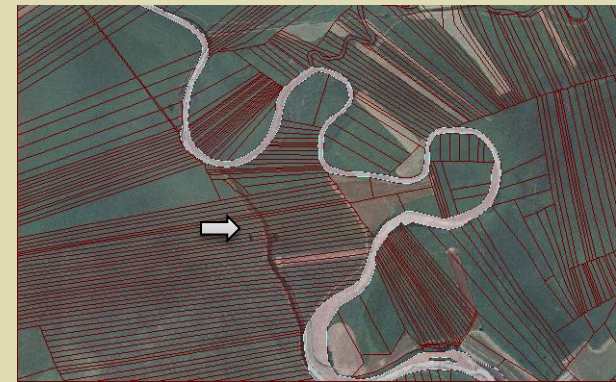
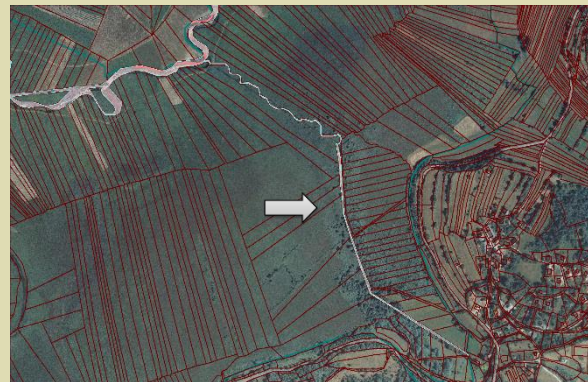
Target species:  
*Crex crex*



## 1. Abandoning of meadow mowing by local landowners



## 2. Modified watercourses



## 3. Lack of knowledge of local nature and its conservation.

## THREAT 1: Abandoning of meadow mowing by local landowners

**The Park purchased 260 ha of highly overgrown land from private owners.**

**Land can only be used with the aim of long-term nature protection (FIRST in Slovenia)**

**Land was purchased in accordance with the Slovenian Nature Conservation Act.**



**Mulching and mowing – in a *Crex crex* friendly way.**

**Together in both LIFE projects, 410 ha of land was purchased by the Park, 50 % of land is included in the Agri-Environmental scheme (protecting *Crex crex*)**



# FRAGMENTATION OF LAND PLOTS

Most land plots located on Cerknica Lake vary from size 0,5 to 1 ha







## THREAT 2: Modified watercourses

1. Technical documentation for the restoration of Cerknica Lake watercourses that have been redirected into straight channels was prepared.
2. Action Plan for the restoration of all watercourses was prepared.



3. Two watercourses with a total length of 1,35 km have been restored.



NOTRANJSKI  
REGIJSKI PARK

# MODIFIED WATERCOURSES





NOTRANJSKI  
REGIJSKI PARK

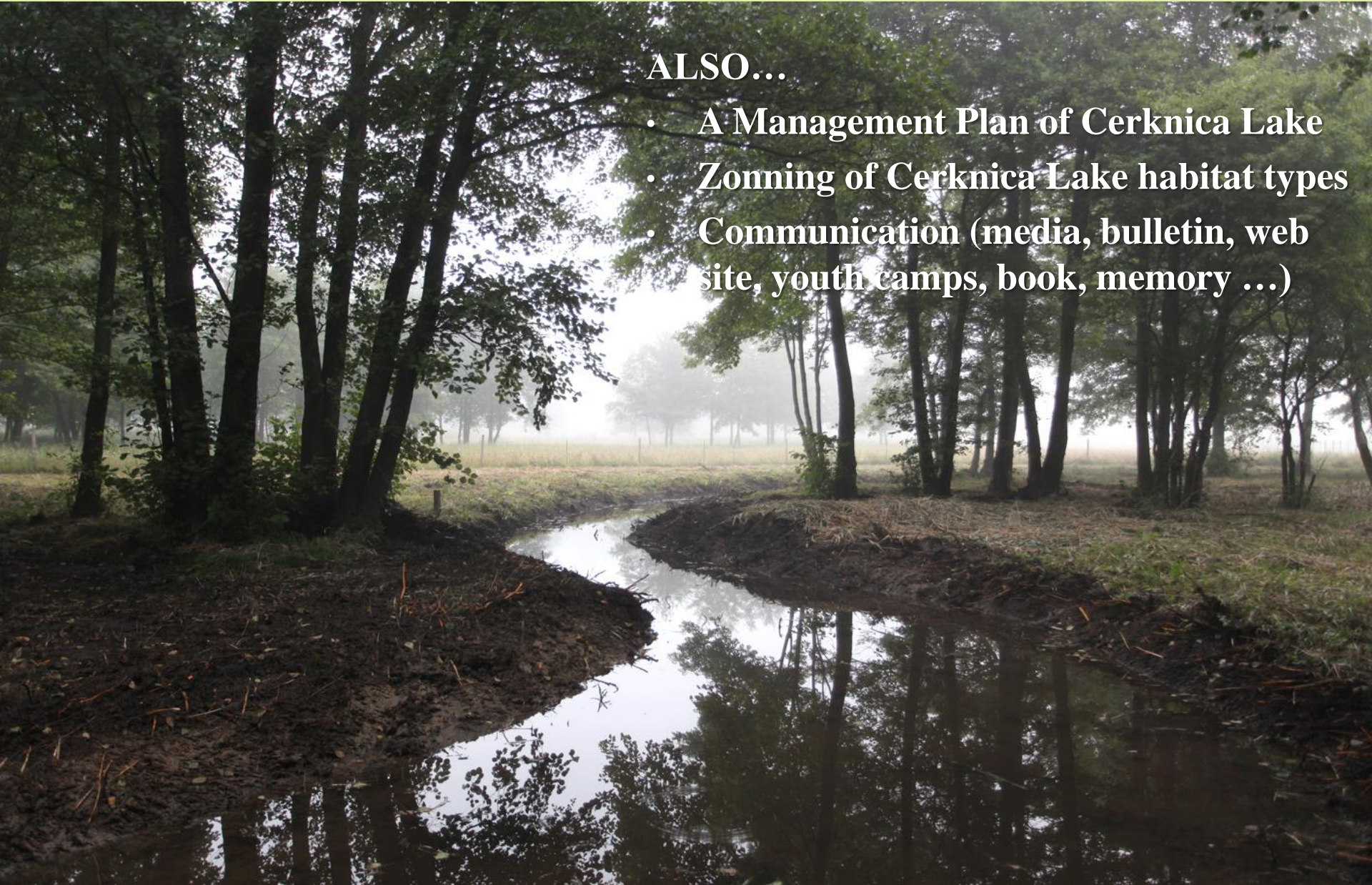
# MODIFIED WATERCOURSES





## ALSO...

- A Management Plan of Cerknica Lake
- Zonning of Cerknica Lake habitat types
- Communication (media, bulletin, web site, youth camps, book, memory ...)





## CURRENT PROJECTS:

- LIFE Stržen
- Kras.Re.Vita



These projects are continuing the work started by project LIFE Intermittent Cerknica Lake





**NOTRANJSKI  
REGIJSKI PARK**

# Thank you for your attention

**Irena Likar**

**E-mail:**

**[irena.likar@notranjski-park.si](mailto:irena.likar@notranjski-park.si)**

**[irena.likar@gmail.com](mailto:irena.likar@gmail.com)**

**GSM: +386 41 645 546**



**Photos taken by: Valentin Schein**

**E-mail:**

**[tine.schein@notranjski-park.si](mailto:tine.schein@notranjski-park.si)**