



ENVIRONMENT LIFE Programme



Integrated projects

NATURAL OUR WATER. OUR FUTURE COURSE

Project Start: October 2015

Duration: 10 years

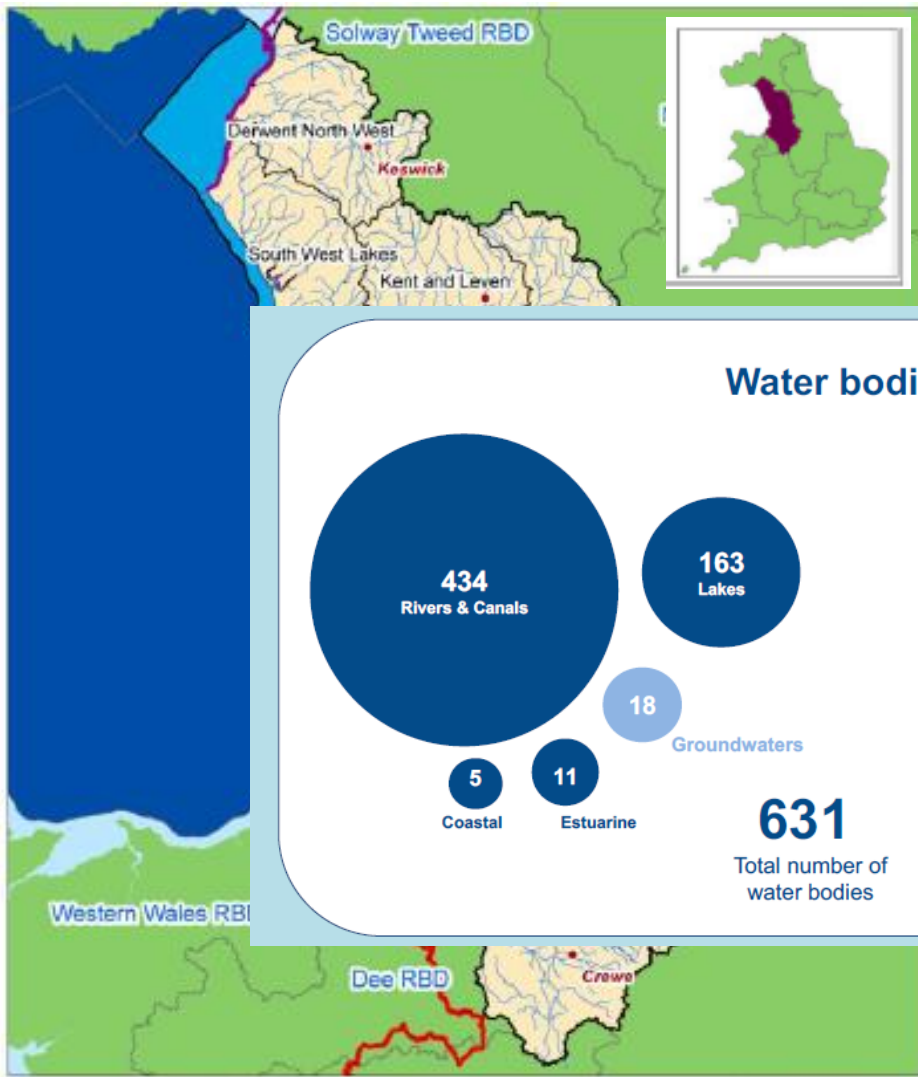
Funding: €20M with €12M from EU



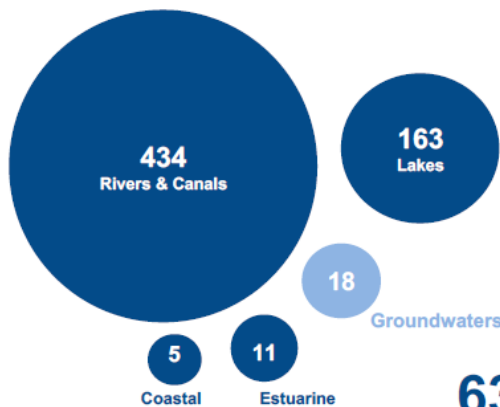
North West River Basin District



North West River Basin District



Water bodies and current status



631
Total number of water bodies

22% of surface water bodies are at good or better ecological status

79% of the elements that define surface water ecological status are at good or better now

39% of groundwater bodies are at good chemical status now

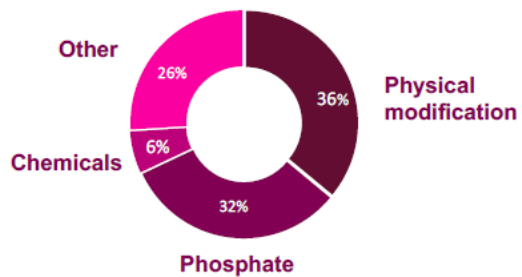
89% of groundwater bodies are at good quantitative status now

North West River Basin District

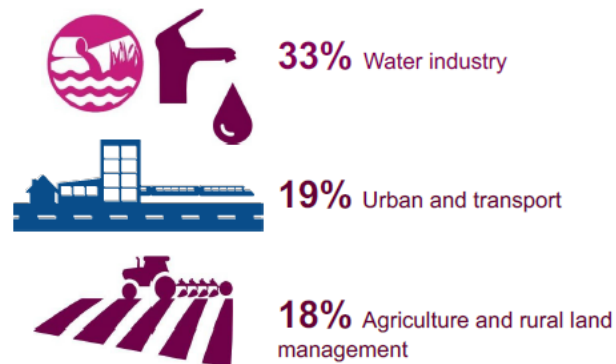


Reasons for not achieving good status

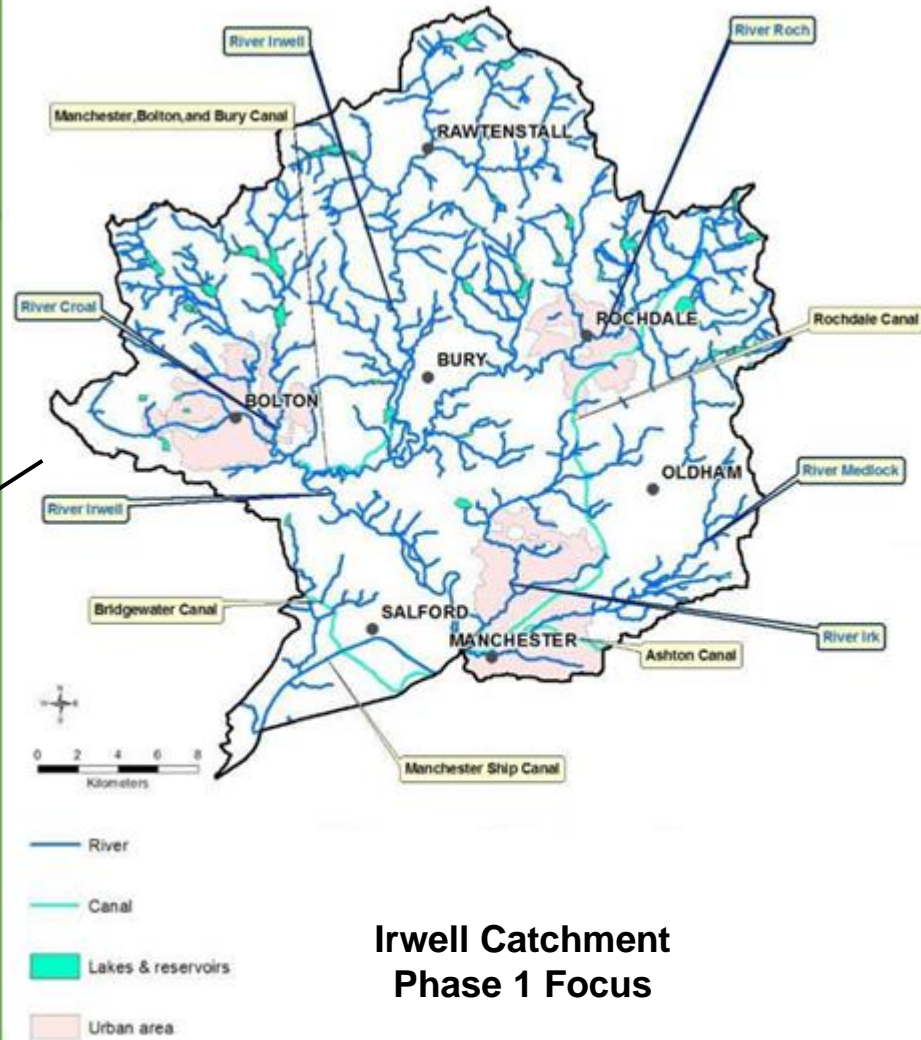
Top 3 pressures preventing waters reaching good status



Top 3 sectors contributing to waters not reaching good status



North West River Basin District



**Irwell Catchment
Phase 1 Focus**

Natural Course - Strategic Objectives

Integrated Water Management



**Improve
Water Quality**

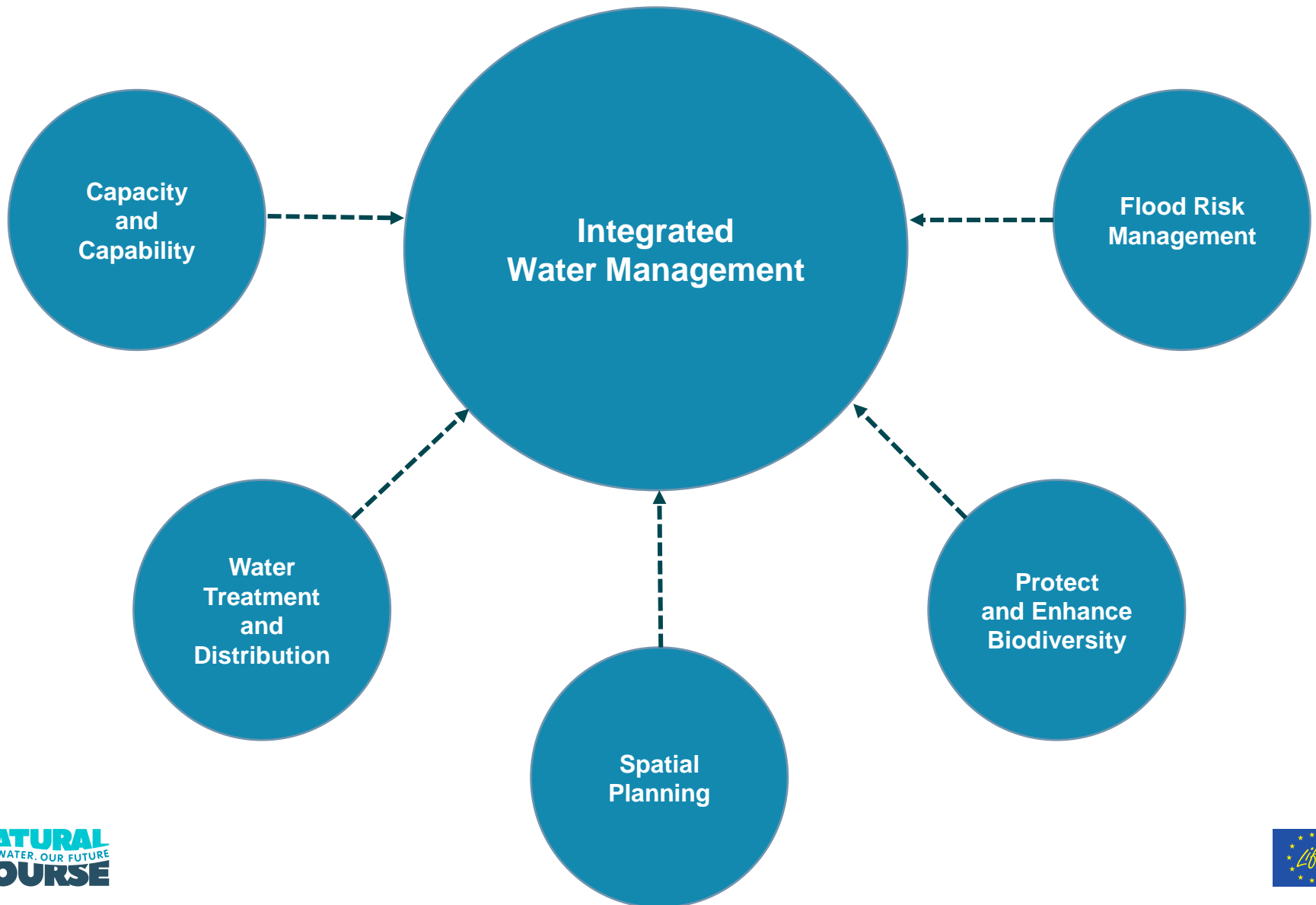


**Reduce
Flood Risk**



**Enhance
Biodiversity**

Natural Course - Strategic Approach



Natural Course - Programme Objectives

Detailed Programme Objectives

High Level

Complementary

Increase capacity to deliver improvements in the river basin district's water environment

Increase fund mobilization and leverage to improve cost benefit ratios through more synergistic measures

Demonstrate feasibility of natural infrastructure solutions to address diffuse pollution and flooding

Increase engagement and formalize stakeholders' roles to better target priorities for integrated action

Improve understanding of innovative solutions by improving third party inputs into river basin planning

Reduce barriers to integration by exploring optimal arrangements for catchment management

Provide mechanisms to upscale and replicate successes across England and the EU

Establish principles for improving cross sectoral integration to achieve water environment objectives

Resolve problems relating to cross border management of water bodies with devolved administrations

Local Objectives

Collaboration & Integration

Innovation

Step Change In Delivery

Mobilising Funds

Natural Capital Approach

Themes

Engagement

Irwell Intensive Catchment

New Intensive Catchment

Wider Water Governance

Link to National Strategy

Diffuse rural pollution

Natural Flood Management

Sustainable Drainage Solutions

Green Infrastructure

Ecosystem Services

River Basin Management

Diffuse urban pollution

Natural Course - Programme Approach



Build knowledge, capacity and capability



Develop best practice



Develop new ways of working



Engage, integrate and communicate

Natural Course - Programme progress



3 urban forestry demonstration projects

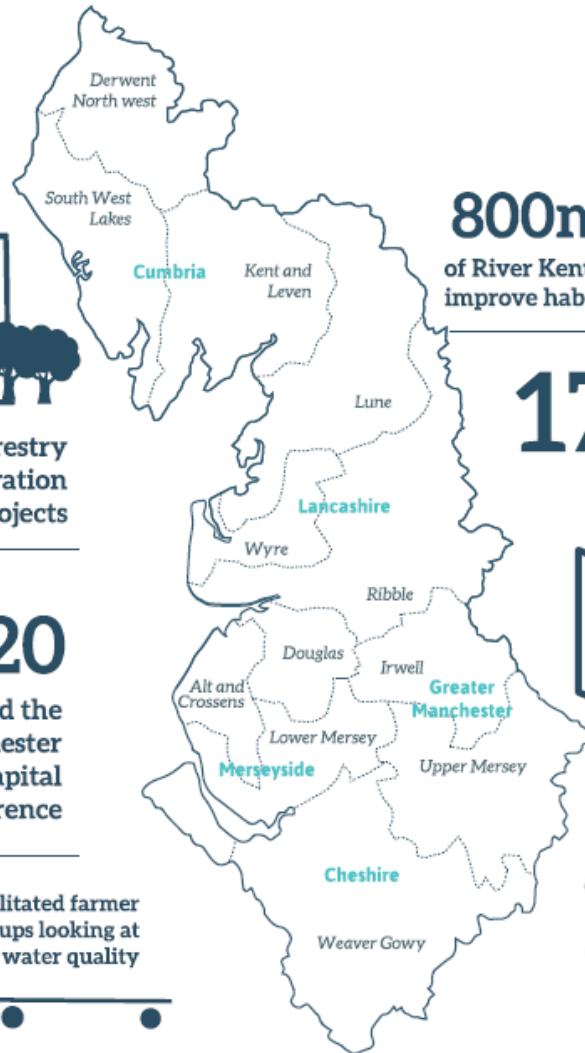


120

people attended the Greater Manchester Natural Capital Annual Conference



7 facilitated farmer groups looking at water quality



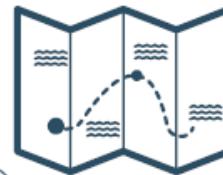
800m



of River Kent embankment lowered to improve habitat for fish and crustaceans

17

members joined the Irwell Natural Flood Risk Management Group



Natural Flood Management opportunities mapped for 3 Cumbria catchments, the Irwell catchment and Mersey catchment

9

locations identified for an integrated catchment approach

80

data sets compiled to inform River Irwell Evidence and Measures Report

40km of urban river surveyed for birdlife



12,000 trees being planted, covering an area of approximately 11 hectares spread over 7 sites

NATURAL

OUR WATER. OUR FUTURE

COURSE

